



# TOUCHBOX

WIRELESS CONTROLLER

iPhone

---

# INSTRUCTION MANUAL

---



ZAETECH

Thank you for purchasing TouchBox by ZAETECH.

**Disclaimer** – TouchBox is for show and off road use only. It may not be used while the vehicle is running. By using this device you are agreeing to the terms of use and warranty on page 11.

## WIRING DIAGRAM

<b>Pin</b>	<b>Function</b>	<b>Wire Color</b>	
1	Ground	---	Black
2	Ignition	---	Black/ Orange
3	DigiGauge Expansion 1	---	Black/ Yellow
4	DigiGauge Expansion 2	---	Black/ Blue
5	Deflate Rear Right	---	Orange
6	Deflate Rear Left	---	Brown
7	Deflate Front Right	---	Yellow
8	Deflate Front Left	---	Green
9	Power (+12v)	---	Red
10	Auxiliary 3	---	Black/ White
11	Auxiliary 2	---	Black/ Green
12	Auxiliary 1	---	Black/ Red
13	Inflate Rear Right	---	Blue
14	Inflate Rear Left	---	Grey
15	Inflate Front Right	---	Violet
16	Inflate Front Left	---	White

# INSTALLATION

**Note:** If you have purchased the plug and play AccuAir VU4 harness, plug it in inline with your VU4 and continue to step 3. You won't be using the main wiring harness or T-Tap connectors that are included in the box.

## Step 1:

- 1) Attach the included T-Tap connectors to all 8 of your 12v valve wires.
- 2) Line up the wire in the metal groove of the clip and use pliers to clamp it down.

**Note:** Squeeze connector hard with pliers until you hear it click.

## Step 2:

- 1) Reference the wiring diagram on page 1 to connect the TouchBox valve control wires.
- 2) Plug each of the 8 TouchBox valve control wires to its corresponding T-Tap connector on your valves.

**Note:** Ensure that the red spade connector is fully inserted straight into the blue T-Tap connector.

## Step 3:

- 1) Install the supplied wireless antenna in a visible area from outside the car. Preferably high up in the front or rear window of the vehicle.
- 2) Connect the antenna wire to the antenna port on the side of the TouchBox device.

**Note:** Ensure that the antenna is screwed in tight and the wire isn't kinked or squished when routed.



## Step 4:

- 1) Connect the black/orange ignition wire to your ignition.
- 2) Connect the red power wire to a constant 12v source.
- 3) Securely ground the black wire.
- 4) Tape the ends of all unused auxiliary wires.
- 5) Plug the wiring harness into the TouchBox device.

**Note:** The plug on the TouchBox device will glow red when powered.

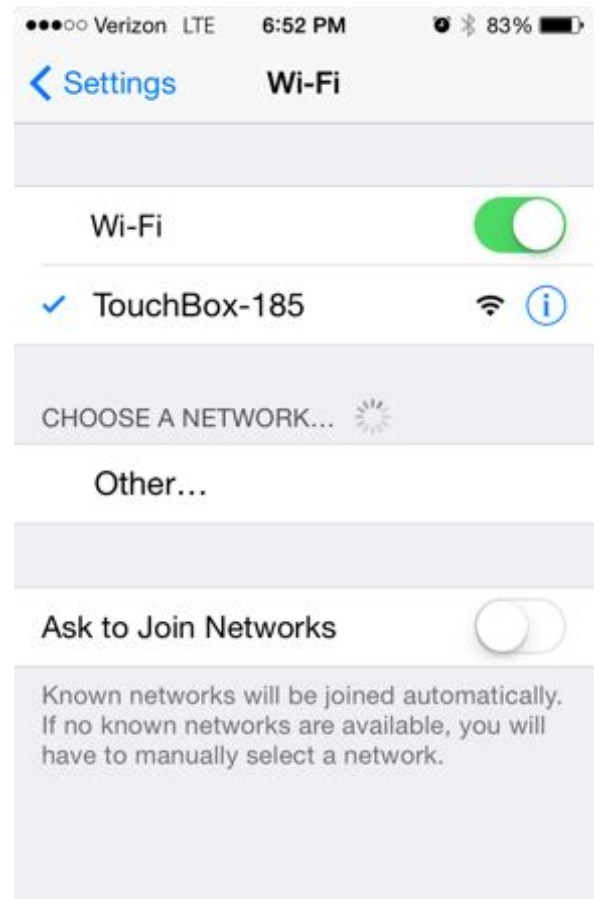
**Note:** Do not connect auxiliary accessories until the main harness is plugged in.



## Step 5:

- 1) Open the 'Wi-Fi Networks' screen in the 'Settings' of your iPhone.
- 2) Connect to the 'TouchBox-XXX' network that matches the serial number of your device.

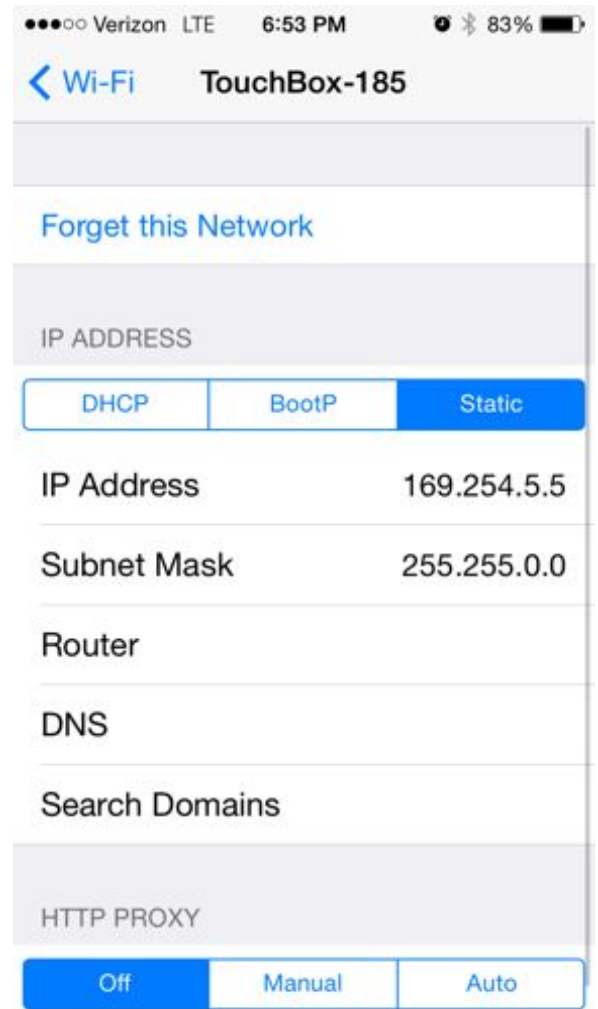
**Note:** The serial number of the Wi-Fi network shown is 103. Your unique serial number can be found on the bottom of your TouchBox device.



## Step 6:

- 1) Open the settings of your TouchBox's Wi-Fi network by clicking on the little blue arrow next to it.
- 2) Set the connection type to 'Static'.
- 3) Set the IP Address to 169.254.5.5
- 4) Set the Subnet Mask to 255.255.0.0

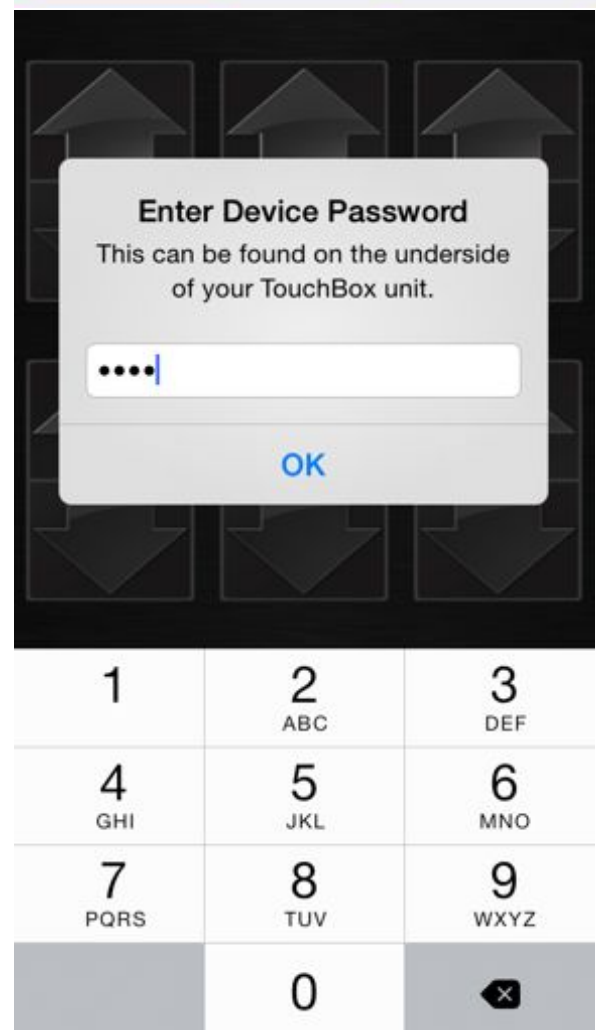
**Note:** Your iPhone will automatically connect to your TouchBox when you're near your vehicle.



## Step 7:

- 1) Open the TouchBox app and you will be prompted to enter your device password.
- 2) Enter the password found on the bottom of your TouchBox device.

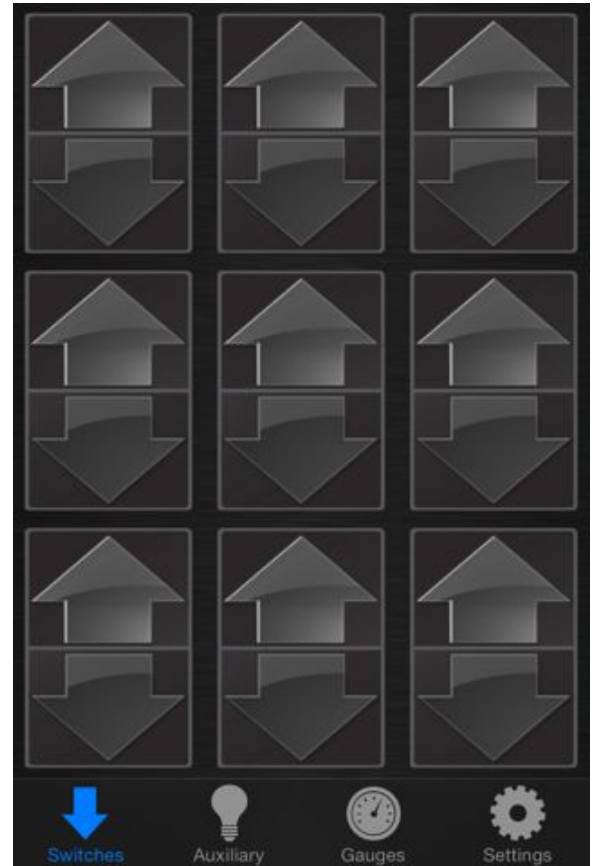
**Note:** Once you enter the password the app will save it permanently.



# CONTROL

## Switches

This is the main screen to control your air suspension. Once connected to your device the screen will get brighter and the buttons will become active. To ensure safety, this screen will only be active when you have a solid connection to a TouchBox device. You can also change the theme in the options menu. When the ignition is on this screen will remain lit but control of the valves will be disabled.



## Auxiliary

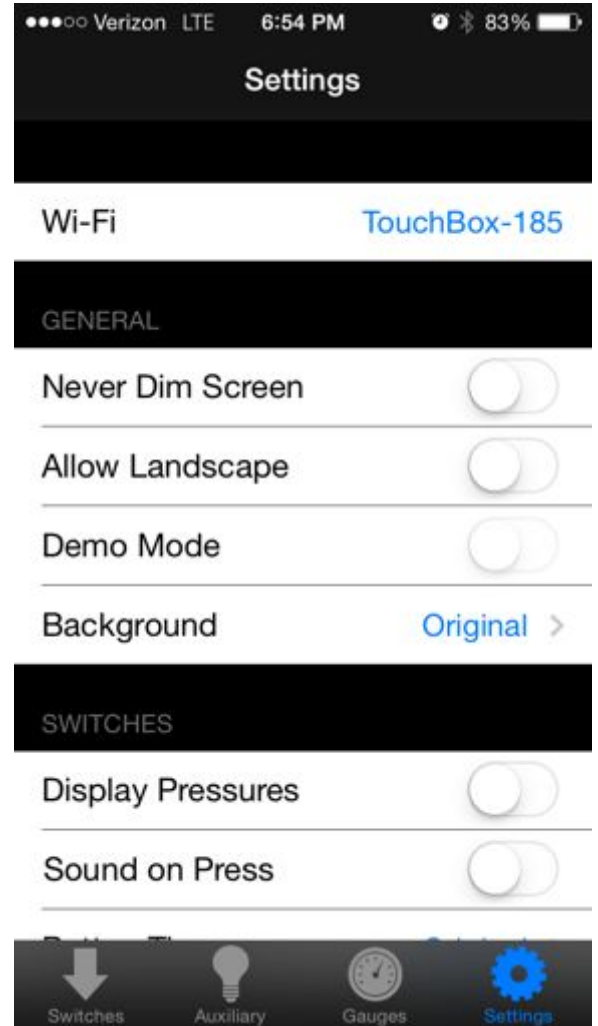
The auxiliary screen allows you to control air ride accessories or other gadgets in your vehicle. All 3 of the buttons are momentary just like the switches. You have the ability to change the labels of the buttons in the options screen. See page 8 for more details.

**Note:** You can use emoji characters in the button labels. 👍 🐱



## Options

In the options screen you have the ability to customize your experience. When actively connected to your TouchBox device, any settings that you change will be saved for that specific device. If you connect to another TouchBox, it will load the last settings you saved for that device. We plan on adding a lot more options as time goes on so make sure to keep your app updated!



# ADDITIONAL FEATURES

## Auxiliary Setup

### If your serial number is lower than 200:

The 3 auxiliary wires supply momentary 5v when pressed. These can be used to power a small 5v device (i.e. aftermarket alarm functions). To use these with 12v devices (i.e. air valve or air horn) a 5v triggered relay is required for each auxiliary function. The TouchBox Auxiliary Relay, a 12v relay board with 5v triggers, is available to purchase separately. It includes 3, 5v triggered relays with an attached wire harness for easy connection

### If your serial number is higher than 200:

The 3 auxiliary wires supply momentary 12v when pressed. These can be used to power a small 12v device (under 2 amps) like an air horn, electric tank drain, or trunk popper.

## Pressure Display with DigiGauge

The small 3-pin plug on the wiring harness is an expansion slot for DigiGauge. This will allow TouchBox to receive pressure readings and display them on your iPhone. Your TouchBox device already is set up to send and receive pressure readings when connected to DigiGauge.



## Positional Faceplate

The faceplate of the TouchBox device is a perfect square. It is designed so that you can change the direction of the logo to suit your trunk layout. Just remove the 4 screws and rotate it to any direction you desire.



**Note:** Do not tamper with the electronics when the cover is off. It may damage your device.



# DETAILED INFORMATION

- When the ignition is on you cannot adjust your air suspension. You can establish a connection with the device and press buttons, but they won't work. This is a hard-wired safety feature. Auxiliary buttons will work with ignition on.
- The Wi-Fi network the TouchBox device makes is open without a password. Anyone near your vehicle can connect to it but in no way can they control your vehicle or block you from connecting. The only way to control your TouchBox is with the correct password.
- There is no way for you to change your password. Use caution when giving it out.
- More than one iPhone can be connected to a TouchBox Wi-Fi network simultaneously. The iPhone that opens the app with the correct password first will have control over the device.
- The advertised range of the TouchBox Wi-Fi network is calculated in an open area. If you try to use it from inside a building or behind an obstacle then the range is significantly reduced. Placement of the device in your vehicle also makes a difference. Try to install it in as high of any area as possible, preferably near a window.
- The TouchBox device has a very small continuous power draw (50mA) that is acceptable for a frequently driven vehicle. Disconnect your TouchBox device if your vehicle is going to sit unused for longer than four weeks.

# TROUBLESHOOTING

## **I can't connect to my TouchBox device**

- Make sure the TouchBox device powered on and the plug is glowing red. If you don't see the red glow then your device is not receiving power.
- Your TouchBox device may have encountered an error during its last connection and may be unable to establish a new connection. Please unplug your TouchBox device and plug it back in to reset the Wi-Fi broadcast.

## **It takes a long time to connect to my TouchBox**

- You may not have the static IP settings setup that enables the instant connection time. If you don't set the static IP then your iPhone may take up to 30 seconds to establish a connection with TouchBox. Go to step 6 and follow the instructions to setup static IP.

## **The TouchBox app freezes while connecting**

- Your TouchBox device may have encountered an error during its last connection and may be unable to establish a new connection. First try to quit the app and reopen it. If the problem still occurs then unplug your TouchBox device and plug it back in to reset the Wi-Fi broadcast.

## **The valve control is slow and inconsistent**

- Your TouchBox device is not receiving a clear signal from your iPhone. This problem occurs when you are at the edge of the usable range or if there are obstacles blocking the wireless signal. Either try using TouchBox closer to your vehicle or relocate your TouchBox device. To maximize range and connection quality locate your TouchBox device as high as possible, preferably near a window.

# TERMS OF USE

- TouchBox is for show and off road use only. It may not be used while the vehicle is running.
- TouchBox is designed to work with 8 electric valves. It is only to be installed with valves that draw less than 2 amps.
- TouchBox does not prevent you from over inflating your bags. Do not install on systems with tank pressure greater than 150psi.
- You are required to install the ignition wire to a 12v ignition source.
- Do not operate TouchBox if anyone is near or under the vehicle.
- TouchBox is a supplemental control system for your existing management. Do not use it to replace your existing hard-wired control system.
- If you need to work under your vehicle then you must disconnect your TouchBox device from its power source.
- You must wire your TouchBox with the supplied wiring diagram. Any other method is prohibited.
- The TouchBox device is not weather proof. It must be installed in a dry location inside the cabin of the vehicle.

## WARRANTY

**Limited Warranty.** Zaetech, LLC warrants that upon delivery and for a period of 90 days following delivery, the TouchBox will be free from defects in material and workmanship under proper and normal use. Failure to comply with the terms of use shall immediately void this warranty. You are responsible for proper installation, operation, and maintenance as specified in our publications on the TouchBox for using the product in recommended applications within rated capacities. **This warranty gives you specific legal rights, and you may also have other rights which vary from state to state.**

**Remedies.** In accordance with the terms of the limited warranty stated above (“Warranty”), Zaetech, LLC will repair or replace any defective TouchBox, provided that written notice of the defect is received by Zaetech, LLC within thirty (30) days of the appearance of such defect. If notice is not given within such period, any claim for breach of warranty shall be conclusively deemed to have been waived and Zaetech, LLC shall not be liable under this Warranty.

**Limitations on Warranty.** Zaetech LLC’s liability for any defect in the TouchBox, whether based on contract, tort, warranty, strict liability, or any other theory, shall not exceed the purchase price of the defective TouchBox. **THIS WARRANTY IS IN LIEU OF ALL OTHER WARRANTIES, WHETHER ORAL, WRITTEN, EXPRESS, IMPLIED, STATUTORY, OR OTHERWISE. IN PARTICULAR, THERE IS NO WARRANTY OF MERCHANTABILITY OR FITNESS FOR A PARTICULAR PURPOSE. THE REMEDY OF REPAIR OR REPLACEMENT PROVIDED UNDER THIS WARRANTY IS EXCLUSIVE AND IN LIEU OF ALL OTHER REMEDIES. ZAETECH, LLC SHALL HAVE NO LIABILITY TO THE CUSTOMER FOR CONSEQUENTIAL, SPECIAL, INCIDENTAL OR PUNITIVE DAMAGES OF ANY KIND WHATSOEVER, INCLUDING, BUT NOT LIMITED TO, PERSONAL INJURY NOT CAUSED BY NEGLIGENCE OF ZAETECH, LLC, PROPERTY DAMAGE, LOST PROFITS OR OTHER ECONOMIC INJURY DUE TO ANY DEFECT IN THE GOODS OR ANY BREACH OF THIS AGREEMENT BY ZAETECH, LLC. ZAETECH, LLC SHALL NOT BE LIABLE TO THE CUSTOMER IN TORT FOR ANY DEFECT IN THE DESIGN OR MANUFACTURE OF THE GOODS.** No representative, agent or dealer of Zaetech LLC has authority to modify, expand, or extend this Warranty, to waive any of the limitations or exclusions of this Warranty, or to make any different or additional warranties with respect to any TouchBox or services furnished by Zaetech, LLC. **Some states do not allow limitations on how long an implied warranty lasts, so the above limitation may not apply to you. Some states do not allow the exclusion or limitation of incidental or consequential damages, so the above limitation or exclusion may not apply to you.**



[zaetech.net](http://zaetech.net)