

Air LiftTM

PERFORMANCE

Kit 75592

Universal Chapman



AIR LIFTTM

PERFORMANCE

INSTALLATION GUIDE

For maximum effectiveness and safety, please read these instructions completely before proceeding with installation.

Failure to read these instructions can result in an incorrect installation.



TABLE OF CONTENTS

Introduction	2
Notation Explanation	2
Important Safety Notices	2
Hardware List	2
Installing the Air Suspension	3
Preparing the Vehicle	3
Strut Removal	3
Assembling and Installing the Air Strut	3
Designing the Lower Mount	4
Welding the Adapter	4
Reinstalling the Strut Assembly	6
Warranty and Returns Policy	7
Replacement Information	7
Contact Information	7



Hardware List

Item	Part #	Description.....	Qty
A	35066	Strut	2
B	35056-001	Adapter tube	2
C	35056-002	Clevis	2
D	09735	Rubber protector	2
E	21263	Air fitting	2



Missing or damaged parts? Call Air Lift customer service at (800) 248-0892 for a replacement part.

Installing the Air Suspension

CAUTION

ALWAYS KEEP SAFETY IN MIND WHEN WORKING ON YOUR VEHICLE.

NOTE

This kit is sold without a warranty.

PREPARING THE VEHICLE

1. Begin the installation by elevating the car. Secure the frame with jack stands or a frame-contact hoist.
2. Remove the wheels.

STRUT REMOVAL

1. Remove the nuts and bolts from the upper strut mount and save for reinstallation.
2. Remove the lower mounting bolt and nut from the clevis and save for reinstallation.
3. Raise the vehicle to lower the suspension. Remove the strut assembly from the vehicle.

ASSEMBLING AND INSTALLING THE AIR STRUT

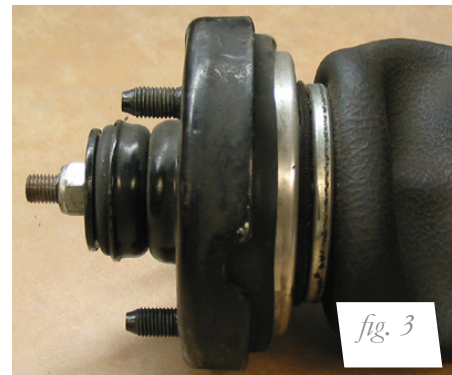
1. Using a spring compressor for safety, remove the nut at the top of the stock strut assembly (fig. 1). Next, remove the stock upper mount and save for later use.



2. Place the rubber protector (D) onto the shaft of the new strut (A) (fig. 2). Next, place the stock mount and bushings onto the strut shaft. Fasten using the supplied nyloc nut (came on strut) (fig. 3).

CAUTION

FAILURE TO PROPERLY INSTALL THE STRUT BUSHINGS OR PROTECTORS IN THE PROPER ORDER WILL CAUSE THE STRUT TO FAIL.



DESIGNING THE LOWER MOUNT

CAUTION

USE EXTREME CAUTION WHEN WELDING ON THE STRUT BODY. FAILURE TO DO SO COULD RESULT IN INJURY.

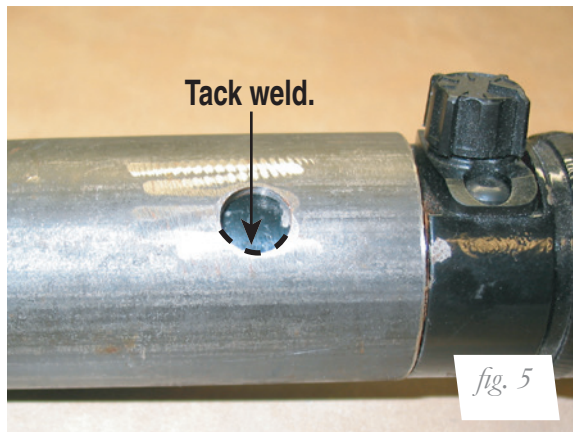
1. Place the new strut assembly into the stock strut location and attach with previously removed hardware. Leave loose at this time.
2. Slide the adapter tube (B) onto the lower strut body (fig. 4). Mark where the strut body shows through the holes in the adapter tube. Remove the adapter tube from the strut and grind the paint off of the areas you marked on the strut body.

NOTE

Welding surfaces must be free of paint.



3. Slide the adapter tube back onto the strut body (fig. 4). Tack weld the adapter tube to the paint-free portions of the strut using the holes provided in the adapter (fig. 5).



4. Place the supplied clevis (C) onto the vehicle's spindle and secure using the previously removed nut and bolt. Leave loose at this time.
5. Using a jack, raise the spindle until the clevis meets the adapter tube.

NOTE

It may be necessary to remove a portion of the adapter tube depending on how low you want the vehicle to sit.

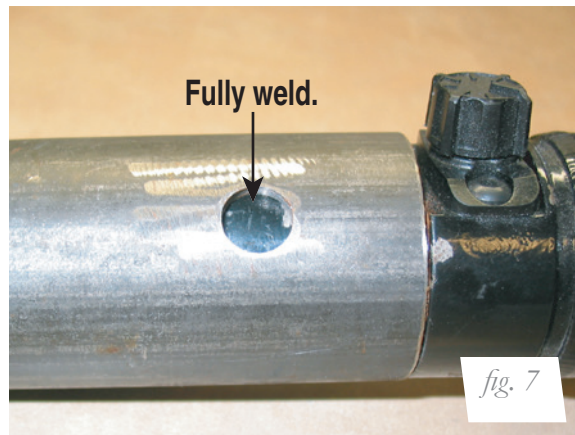
6. Once you have decided on the desired vehicle height and modified the adapter tube as necessary, tack weld the clevis to the adapter tube (fig. 6).



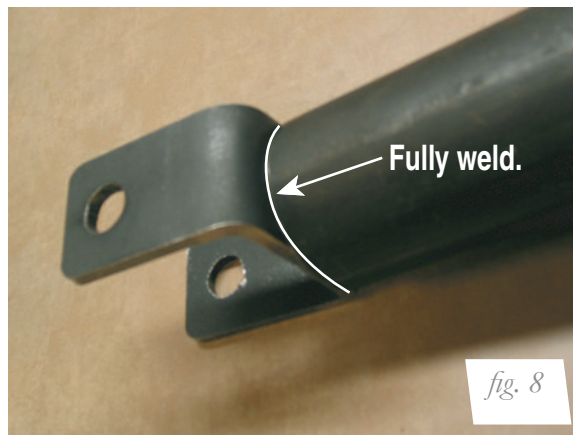
7. Remove the strut assembly from the vehicle.

WELDING THE ADAPTER

1. Fully weld the adapter tube to the strut using the holes provided (fig. 7).



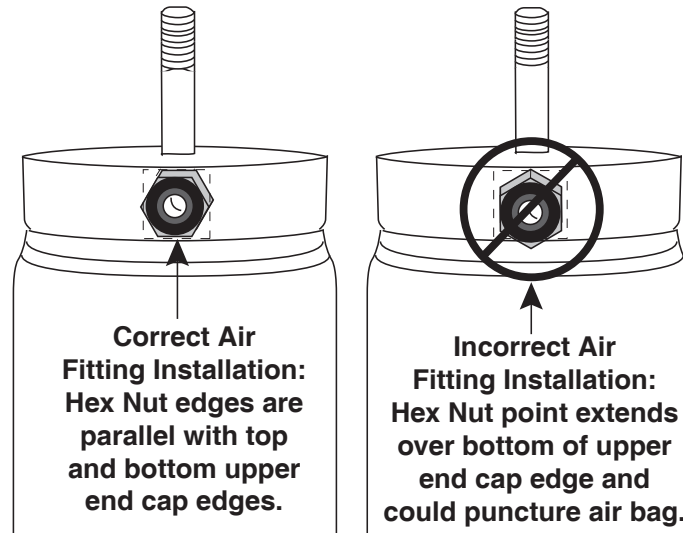
2. Fully weld the clevis to the adapter tube (fig. 8).



3. Paint the strut, making sure not to get paint near the adjustment knob.

REINSTALLING THE STRUT ASSEMBLY

1. Apply loctite or a similar thread sealant to the air fitting (E). Insert the air fitting into the port in the upper end cap of the strut assembly (fig. 9).



2. Reinsert the strut assembly into the vehicle and attach using retained stock hardware.
3. Repeat the above steps for the other side of the vehicle.
4. At this time, tighten all hardware securely.

Warranty and Returns Policy

Air Lift Performance warrants its performance products for one year to the original purchaser against manufacturing defects one year from the date of purchase when used on cars and trucks as specified under normal operating conditions. The warranty does not apply to products that have been improperly applied, improperly installed, or which have not been maintained in accordance with installation instructions furnished with all products. The consumer will be responsible for removing (labor charges) the defective product from the vehicle and returning it, transportation costs prepaid, to the dealer from which it was purchased or to Air Lift Performance for verification.

Air Lift will repair or replace, at its option, defective products or components. A minimum \$10.00 shipping and handling charge will apply to all warranty claims. Before returning any defective product, you must call Air Lift at (800) 248-0892 in the U.S. and Canada (elsewhere, (517) 322-2144) for a Returned Materials Authorization (RMA) number. Returns to Air Lift can be sent to: Air Lift Performance • 2727 Snow Road • Lansing, MI • 48917.

Product failures resulting from abnormal use or misuse are excluded from this warranty. The loss of use of the product, loss of time, inconvenience, commercial loss or consequential damages is not covered. The consumer is responsible for installation/reinstallation (labor charges) of the product. Air Lift Performance reserves the right to change the design of any product without assuming any obligation to modify any product previously manufactured.

This warranty gives you specific legal rights and you may also have other rights that may vary from state-to-state. Some states do not allow limitations on how long an implied warranty lasts or allow the exclusion or limitation of incidental or consequential damages. The above limitation or exclusion may not apply to you. There are no warranties, expressed or implied including any implied warranties of merchantability and fitness, which extend beyond this warranty period. There are no warranties that extend beyond the description on the face hereof. Seller disclaims the implied warranty of merchantability. (Dated proof of purchase required.)

Replacement Information

If you need replacement parts, contact the local dealer or call Air Lift customer service at (800) 248-0892. Most parts are immediately available and can be shipped the same day.

Contact Air Lift Performance customer service at (800) 248-0892 first if:

- Parts are missing from the kit.
- Need technical assistance on installation or operation.
- Broken or defective parts in the kit.
- Wrong parts in the kit.
- Have a warranty claim or question.

Contact the retailer where the kit was purchased:

- If it is necessary to return or exchange the kit for any reason.
- If there is a problem with shipping if shipped from the retailer.
- If there is a problem with the price.

Contact Information

If you have any questions, comments or need technical assistance contact our customer service department by calling (800) 248-0892. For calls from outside the USA or Canada, our local number is (517) 322-2144. You may also contact customer service anytime by e-mail at techsupport@airliftperformance.com.

For inquiries by mail, our address is PO Box 80167, Lansing, MI 48908-0167. Our shipping address for returns is 2727 Snow Road, Lansing, MI 48917.

You may also contact our sales team anytime by e-mail at sales@airliftperformance.com or on the web at www.airliftperformance.com.

Notes

Notes

Need Help?

Contact our customer service department by calling (800) 248-0892. For calls from outside the USA or Canada, our local number is (517) 322-2144.



Thank you for purchasing Air Lift Performance products!

Air Lift Performance • 2727 Snow Road • Lansing, MI 48917 or PO Box 80167 • Lansing, MI 48908-0167
Toll Free (800) 248-0892 • Local (517) 322-2144 • Fax (517) 322-0240 • www.airliftperformance.com

Printed in
the USA